

PINEAPPLE ROAD PLAT

BEING A REPLAT OF PARCEL 2 OF LAKEVIEW BAPTIST CHURCH PLAT, AS RECORDED IN PLAT BOOK 130,
 PAGES 168.
 LYING IN SECTIONS 4 AND 5, TOWNSHIP 46 SOUTH, RANGE 43 EAST, CITY OF DELRAY BEACH,
 PALM BEACH COUNTY, FLORIDA.

STATE OF FLORIDA
 COUNTY OF PALM BEACH

THIS PLAT WAS FILED FOR
 RECORD AT _____ M.
 THIS _____ DAY OF _____
 A.D. 20____ AND DULY RECORDED
 IN PLAT BOOK _____ ON
 PAGE _____

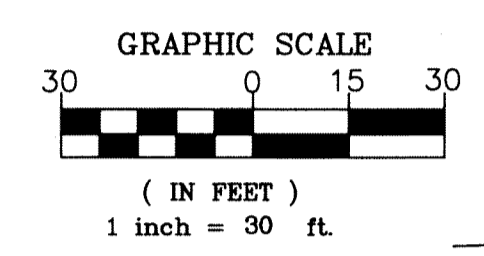
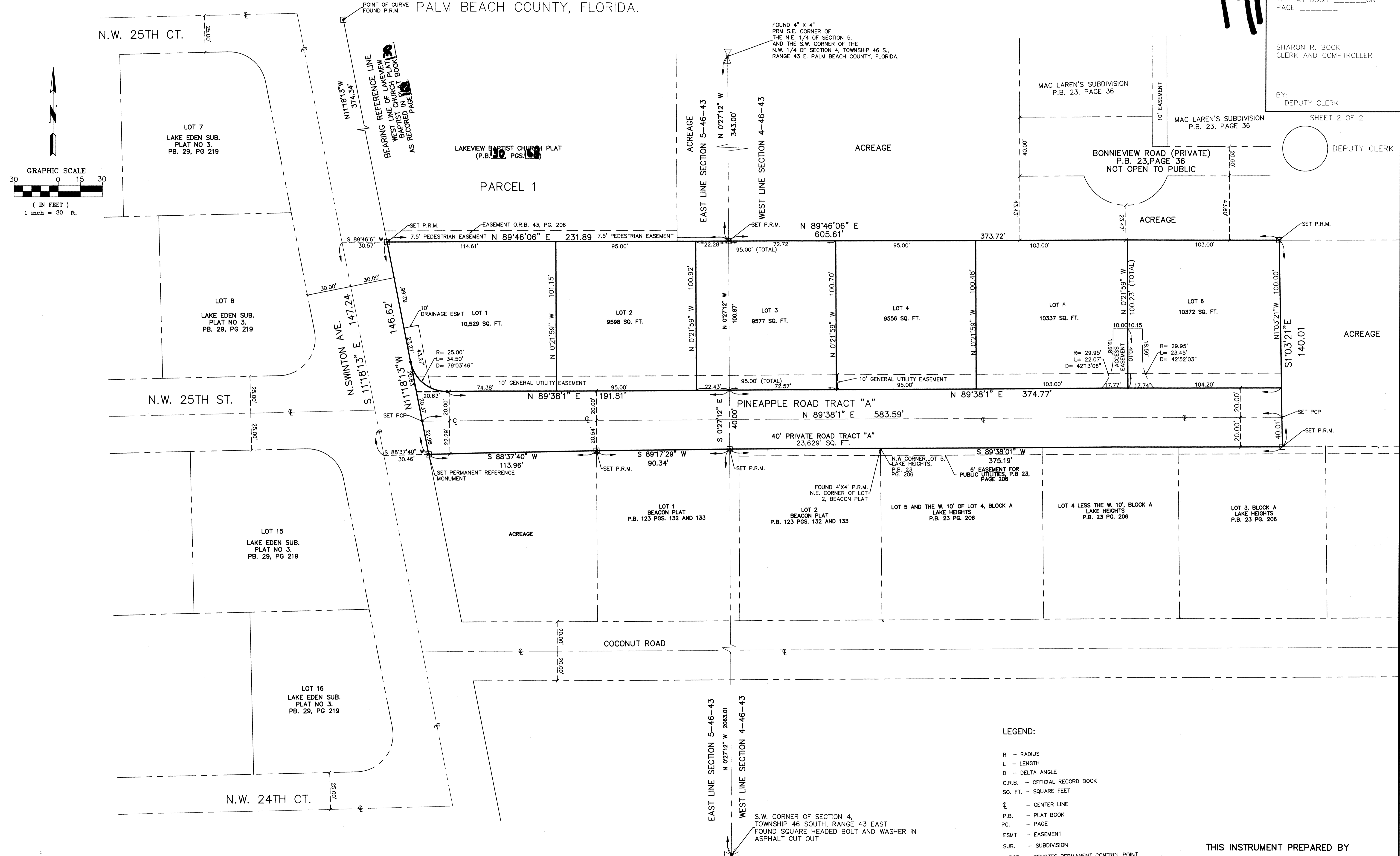
191

SHARON R. BOCK
 CLERK AND COMPTROLLER

BY: _____
 DEPUTY CLERK

SHEET 2 OF 2

DEPUTY CLERK



- LEGEND:
- R - RADIUS
 - L - LENGTH
 - D - DELTA ANGLE
 - O.R.B. - OFFICIAL RECORD BOOK
 - SQ. FT. - SQUARE FEET
 - CL - CENTER LINE
 - P.B. - PLAT BOOK
 - PG. - PAGE
 - ESMT - EASEMENT
 - SUB. - SUBDIVISION
 - PCP - DENOTES PERMANENT CONTROL POINT NAIL AND METAL DISK STAMPED "PCP LB7219"
 - PRM - DENOTES PERMANENT REFERENCE MONUMENT 4" X 4" X 24" CONCRETE MONUMENT WITH ALUMINUM DISK STAMPED PAUL A. DAVIS INC. LB7219

"NOTICE: THIS PLAT, AS RECORDED IN ITS GRAPHIC FORM, IS THE OFFICIAL DEPICTION OF THE SUBDIVIDED LANDS DESCRIBED HEREIN AND WILL IN NO CIRCUMSTANCES BE SUPPLANTED IN AUTHORITY BY ANY OTHER GRAPHIC OR DIGITAL FORM OF THE PLAT. THERE MAY BE ADDITIONAL RESTRICTIONS THAT ARE NOT RECORDED ON THIS PLAT THAT MAY BE FOUND IN THE PUBLIC RECORDS OF PALM BEACH COUNTY."

THIS INSTRUMENT PREPARED BY

PAUL A. DAVIS, P.S.M.
 PROFESSIONAL SURVEYOR &
 MAPPER CERTIFICATE PSM 4531
 STATE OF FLORIDA
 PAUL A. DAVIS, INC.
 4710 N.E. 17TH AVENUE
 POMPANO BEACH, FLA. 33064
 LICENSED BUSINESS NO. 7219